



REGIONAL SPECIALISED METEOROLOGICAL CENTRE -TROPICAL CYCLONES, NEW DELHI TROPICAL WEATHER OUTLOOK

DEMS-RSMC TROPICAL CYCLONES NEW DELHI DATED 16.08.2025

TROPICAL WEATHER OUTLOOK FOR THE NORTH INDIAN OCEAN (THE BAY OF BENGAL AND THE ARABIAN SEA) VALID FOR THE NEXT 168 HOURS ISSUED AT 0600 UTC OF 16.08.2025 BASED ON 0300 UTC OF 16.08.2025.

BAY OF BENGAL:

A fresh Low Pressure area is likely to form over Northwest & adjoining westcentral Bay of Bengal around 18th August 2025.

Yesterday's low-pressure area over south Odisha & adjoining north Andhra Pradesh lay over south Chhattisgarh & neighbourhood at 0300 UTC of today, the 16th August 2025. The associated upper air cyclonic circulation extended upto 7.6 km above mean sea level tilting southwestwards with height. It is likely to move westnorthwestwards and weaken gradually and would reach over Gujarat around 18th August morning as a remnant upper air Cyclonic Circulation.

Associated scattered to broken low and medium clouds with embedded intense to very intense convection lay over Odisha, South Chhattisgarh, north coastal Andhra Pradesh and moderate to intense convection over north Chhattisgarh. Minimum cloud top temperature is minus 70 to 90 Degree Celsius.

Scattered to broken low and medium clouds with embedded intense to very intense convection lay over central and south Bay of Bengal & Andaman Sea and moderate to intense convection lay over north Bay of Bengal.

***PROBABILITY OF CYCLOGENESIS (FORMATION OF DEPRESSION) DURING NEXT 168 HRS:**

24 HOURS	24-48 HOURS	48-72 HOURS	72-96 HOURS	96-120 HOURS	120-144 HOURS	144-168 HOURS
NIL	NIL	NIL	NIL	NIL	NIL	NIL

***NOTE: EVERY 24HR FORECAST IS VALID UPTO 0300 UTC (0830 IST) OF NEXT DAY**

ARABIAN SEA:

An upper air cyclonic circulation lay over Northeast Arabian Sea & adjoining south Gujarat & Konkan & Goa between 1.5 & 3.1 km above mean sea level.

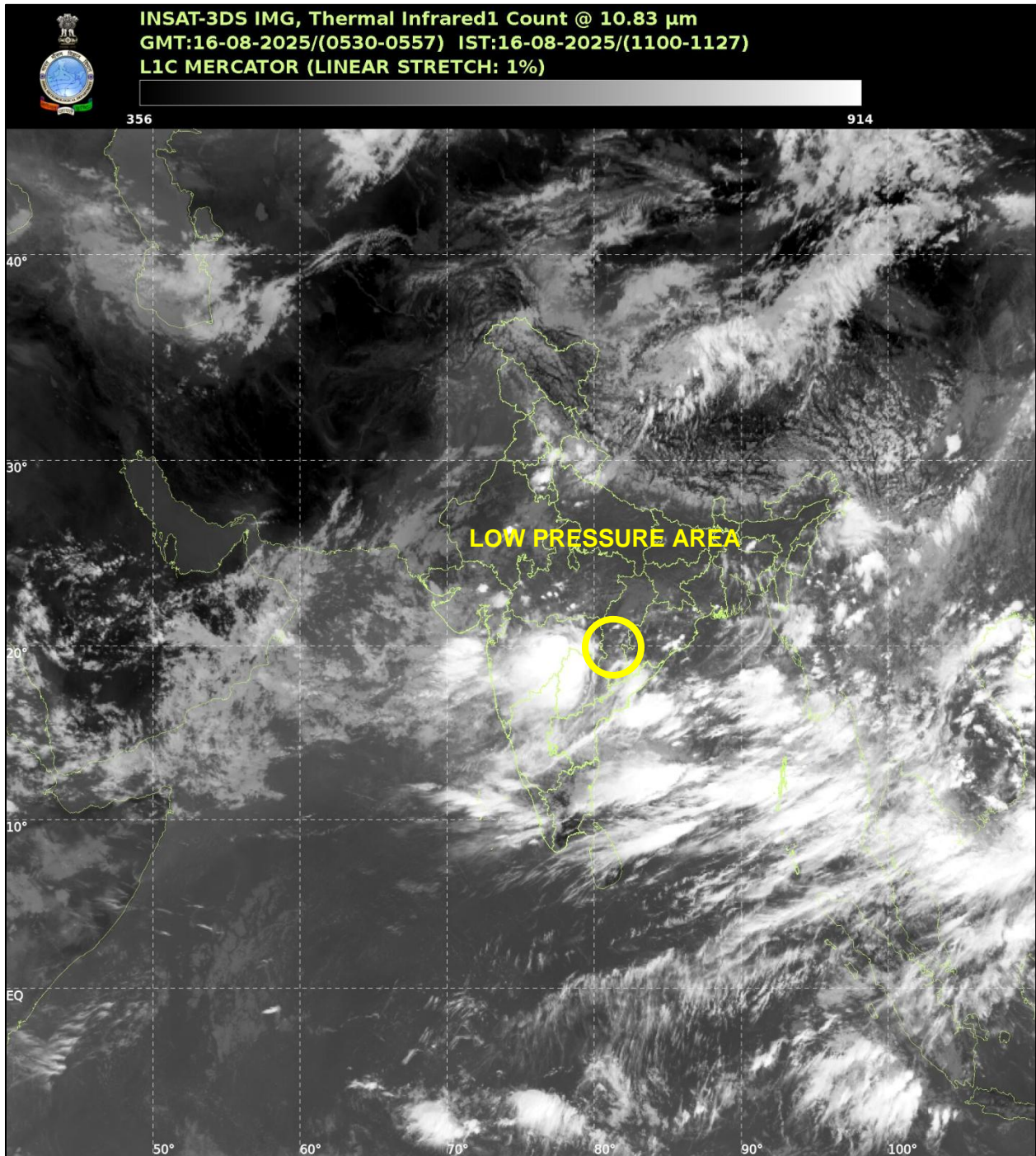
Scattered to broken low and medium clouds with embedded intense to very intense convection lay over east Arabian Sea off Gujarat – North Kerala coasts, Lakshadweep Islands area and moderate to intense convection lay over the rest of the Arabian Sea.

***PROBABILITY OF CYCLOGENESIS (FORMATION OF DEPRESSION) DURING NEXT 168 HRS:**

24 HOURS	24-48 HOURS	48-72 HOURS	72-96 HOURS	96-120 HOURS	120-144 HOURS	144-168 HOURS
NIL	NIL	NIL	NIL	NIL	NIL	NIL

***NOTE: EVERY 24HR FORECAST IS VALID UPTO 0300 UTC (0830 IST) OF NEXT DAY**

REMARKS: Nil



Cloud distribution: (a) Isolated: <25%, Scattered:25-50%, Broken: 51-75%, Solid:>75%, Convection Intensity: (a) Weak: Cloud Top Temperature(CTT)>-25°C,(b)Moderate:CTT:-25°Cto-40°C,(c)Intense:CTT: -41°Cto -70°Cand(d)Very Intense::Less than -70°C
PROBABILITYOFCYCLOGENESIS(FORMATIONOFDEPRESSION):NIL:0%,LOW:1-33%,MODERATE:34-66%ANDHIGH:67-100%
ThisisaguidanceBulletinforWMO/ESCAPPanelMembercountries.VisitrespectiveNationalwebsitesforCountryspecificBulletins